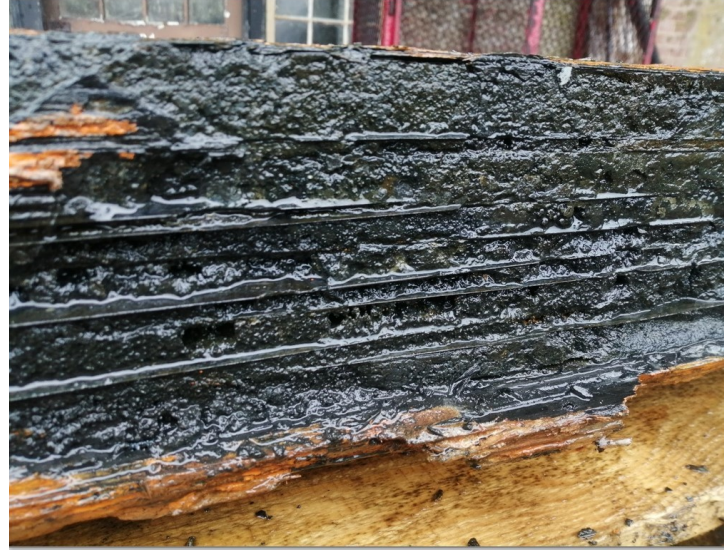
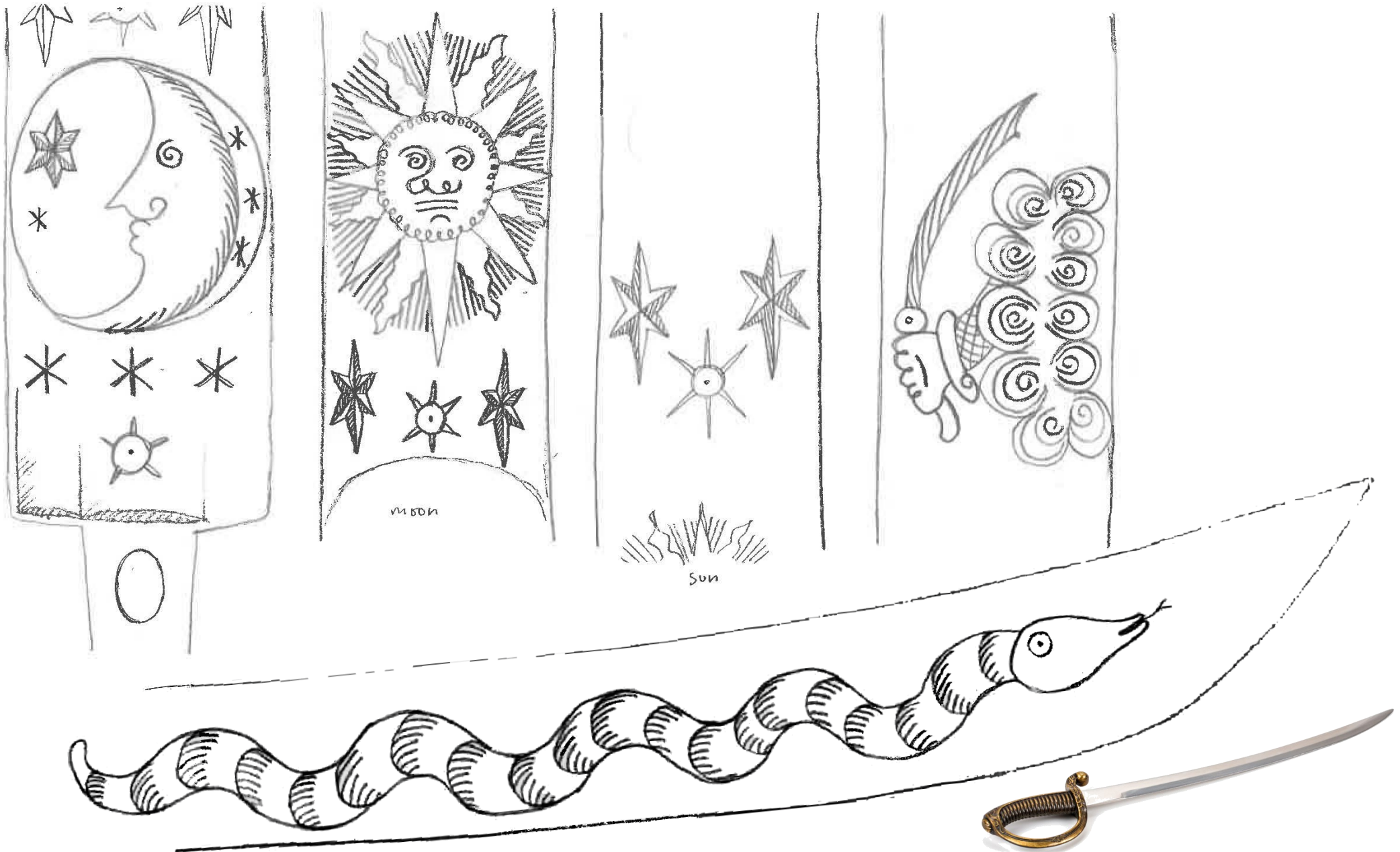


The *Rooswijk* was a Dutch East India Company vessel which sank on the Goodwin Sands, off Kent, in January 1740.

During excavations of the *Rooswijk* a large wooden chest was recovered and opened. The box was filled with curved sword blades called sabres. The grips had not survived but the blades were in excellent condition with clear designs engraved into them. They were probably part of the cargo since there were no hilts.



Can you colour in these Rooswijk sabre blade designs? Which design is your favourite?



Find out more about the Rooswijk at [www.cloudtour.tv/Rooswijk](http://www.cloudtour.tv/Rooswijk)